



Weather Impact

WAGENINGEN  
UNIVERSITY & RESEARCH



Issue Date: 01 December 2023

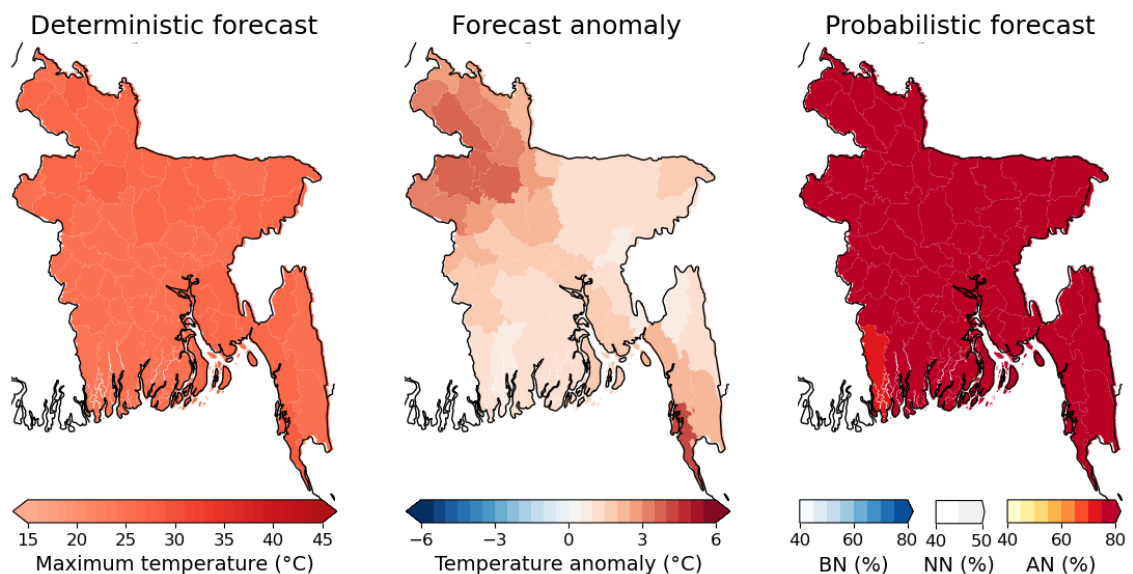
## Subject: Experimental Sub-seasonal forecast for Bangladesh during 01.12.2023 to 28.12.2023

### 1. Weather Forecast for week 1 (Period: 01.12.2023 to 07.12.2023)

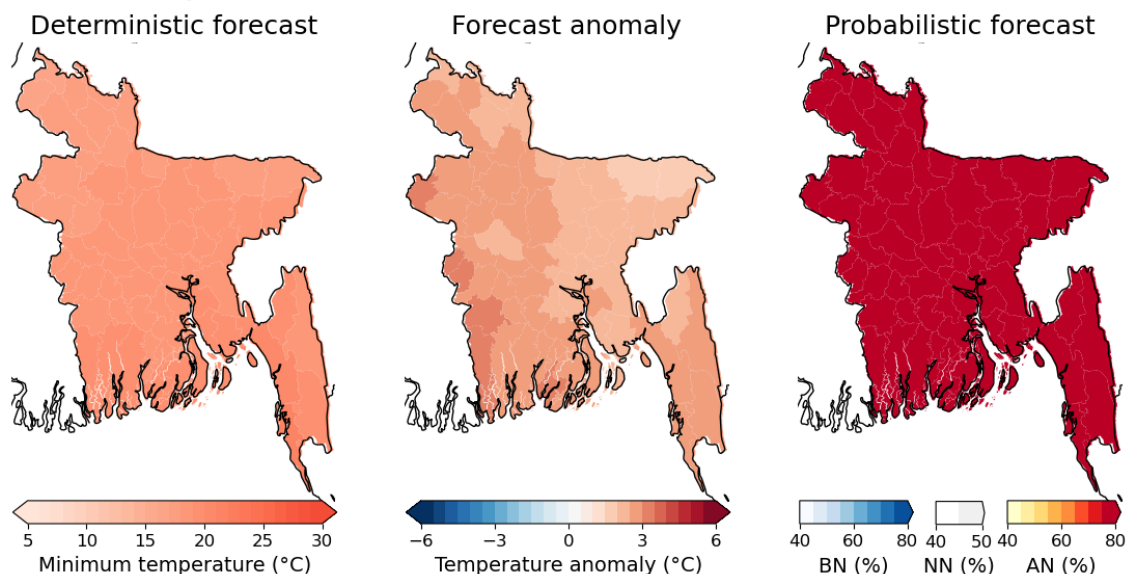
#### 1.1 Significant Information

- Add here the text for significant information.

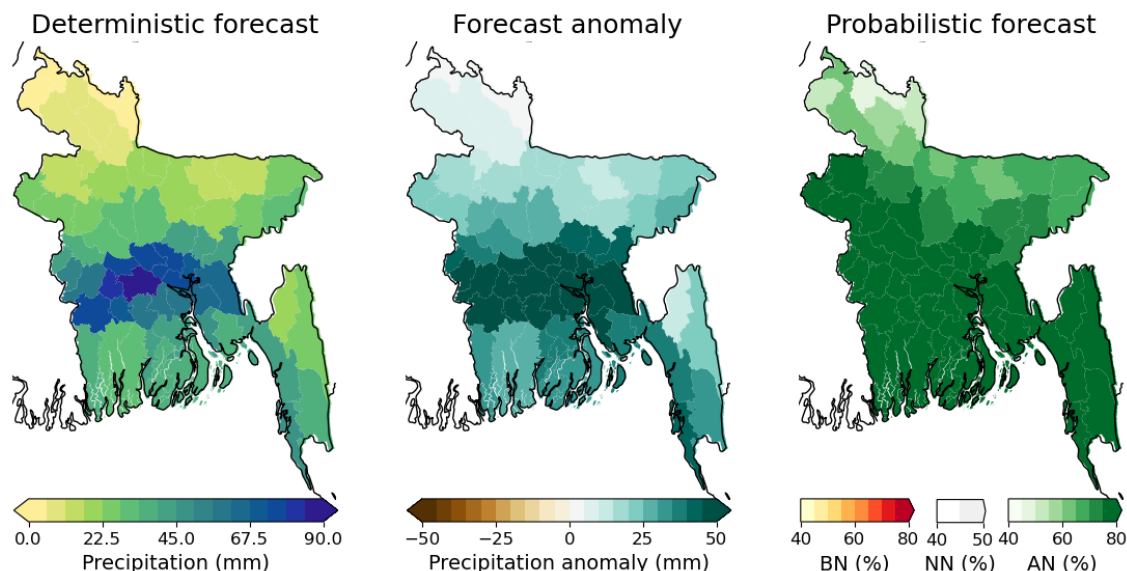
#### 1.2 Maximum Temperature



#### 1.3 Minimum Temperature



## 1.4 Rainfall



## 1.5 Forecast information at District level

Division	District	Maximum Temperature (°C)			Minimum Temperature (°C)			Rainfall (mm)		
		Deter- ministic	Anomaly	Probabilistic (BN/NN/AN)	Deter- ministic	Anomaly	Probabilistic (BN/NN/AN)	Deter- ministic	Anomaly	Probabilistic (BN/NN/AN)
Dhaka	Dhaka	26	2	0/7/93	19	2	0/0/100	75	74	11/10/80
	Faridpur	25	1	3/7/90	18	3	0/0/100	85	83	7/11/81
	Gazipur	26	1	0/6/94	19	2	0/0/100	43	42	15/9/77
	Gopalganj	25	1	1/14/85	18	3	0/0/100	57	55	6/4/90
	Kishoreganj	26	1	0/7/93	19	2	0/2/98	20	18	13/17/70
	Madaripur	25	1	1/10/89	18	2	0/0/100	61	60	8/4/88
	Manikganj	26	2	3/6/91	18	3	0/0/100	73	72	0/19/81
	Munshiganj	26	2	1/6/93	19	2	0/0/100	79	77	10/8/83
	Narayanganj	26	2	0/7/93	19	2	0/0/100	69	68	0/19/81
	Narsingdi	26	1	0/6/94	19	2	0/0/100	44	42	0/24/76
	Rajbari	25	2	3/6/91	18	3	0/0/100	76	75	0/19/81
Rajshahi	Shariatpur	26	1	1/7/92	19	2	0/0/100	60	59	8/4/87
	Bogra	27	4	0/3/97	18	3	0/3/97	17	17	6/20/74
	Joypurhat	27	4	2/0/98	18	3	2/0/98	13	12	4/21/75
	Naogaon	26	4	0/2/98	18	3	0/2/98	16	16	3/16/82
	Natore	26	3	0/4/96	18	3	0/2/98	26	25	0/18/82
	Nawabganj	26	3	0/2/98	18	3	0/2/98	25	24	0/8/92
	Pabna	25	2	3/0/97	18	2	0/0/100	34	33	0/19/81
	Rajshahi	26	3	0/2/98	18	3	0/2/98	23	22	0/14/86
Rangpur	Sirajganj	26	2	0/3/97	18	3	0/0/100	28	27	0/20/80
	Dinajpur	27	4	0/0/100	17	3	0/0/100	7	7	17/22/61
	Gaibandha	27	3	0/2/98	18	3	0/2/98	9	8	19/21/60
	Kurigram	26	2	0/2/98	18	2	0/2/98	5	5	25/24/51
	Lalmonirhat	26	3	0/0/100	17	2	0/0/100	5	5	24/27/49
	Nilphamari	27	3	0/0/100	17	3	0/0/100	6	6	25/26/49
	Panchagarh	26	3	0/0/100	17	2	0/0/100	4	4	28/11/60
	Rangpur	27	3	0/2/98	18	2	0/2/98	6	6	17/24/59
Mymen- singh	Thakurgaon	26	3	0/0/100	17	3	0/0/100	6	5	25/20/55
	Jamalpur	27	3	0/5/95	18	3	0/5/95	18	17	15/20/65
	Mymen- singh	26	1	0/8/92	18	2	0/5/95	18	18	16/18/66
	Netrakona	26	1	0/8/92	18	2	0/5/95	16	15	23/13/64
Chitta- gong	Sherpur	26	2	2/3/95	18	2	2/3/95	17	16	20/17/63
	Bandarban	26	2	0/21/79	20	3	0/2/98	36	32	4/9/88
	Brahamanba ria	26	1	0/8/92	19	2	0/2/98	44	42	11/16/74
	Chandpur	27	2	1/2/98	19	3	0/0/100	64	62	8/4/87
	Chittagong	27	2	0/6/94	21	3	0/0/100	41	38	8/6/86
	Comilla	26	1	0/1/99	19	2	0/0/100	65	62	10/6/85
Cox's Bazar	29	4	0/0/100	22	3	0/0/100	47	44	5/7/88	

	Feni	26	1	0/3/97	19	3	0/0/100	43	39	10/8/82
	Khagrachhari	26	1	0/14/86	19	2	0/0/100	18	15	11/11/78
	Lakshmipur	26	2	0/2/98	19	2	0/0/100	49	45	9/10/81
	Noakhali	26	2	0/1/99	20	2	0/0/100	39	36	7/9/84
	Rangamati	25	1	0/21/79	19	3	0/2/98	26	22	7/9/85
Khulna	Bagerhat	25	1	1/21/78	19	3	0/0/100	32	29	2/4/94
	Chuadanga	25	2	0/6/94	18	3	0/0/100	54	52	0/14/86
	Jessore	25	2	3/11/87	19	3	0/0/100	79	77	0/7/93
	Jhenaidah	25	2	3/6/91	18	3	0/0/100	61	60	0/13/87
	Khulna	25	1	7/18/76	19	3	0/0/100	32	29	2/6/93
	Kushtia	25	2	0/6/94	18	3	0/0/100	39	38	0/16/84
	Magura	25	1	3/7/90	18	3	0/0/100	81	80	0/16/84
	Meherpur	26	2	0/6/94	18	3	0/0/100	42	41	0/15/85
	Narail	25	1	3/11/86	19	3	0/0/100	70	68	0/9/91
	Satkhira	25	1	6/22/72	20	3	0/0/100	34	32	2/6/92
	Barisal	Barguna	26	1	0/10/90	20	3	0/0/100	35	32
Barisal		26	1	1/2/97	18	3	0/0/100	42	39	7/10/83
Bhola		26	2	0/1/99	20	3	0/0/100	37	33	7/6/87
Jhalokati		25	1	1/10/90	19	3	0/0/100	39	37	6/10/84
Patuakhali		26	1	0/1/99	20	3	0/0/100	35	32	4/2/94
Pirojpur		25	1	1/17/83	19	3	0/0/100	42	40	5/9/87
Sylhet	Habiganj	27	1	0/9/91	19	2	0/3/97	26	25	13/16/71
	Maulvibazar	27	1	0/10/90	19	2	0/5/95	30	29	6/27/68
	Sunamganj	26	1	0/8/92	18	2	0/5/95	16	15	14/20/67
	Sylhet	26	2	0/9/91	18	2	0/6/94	23	22	2/30/68

## 1.6 Guidance

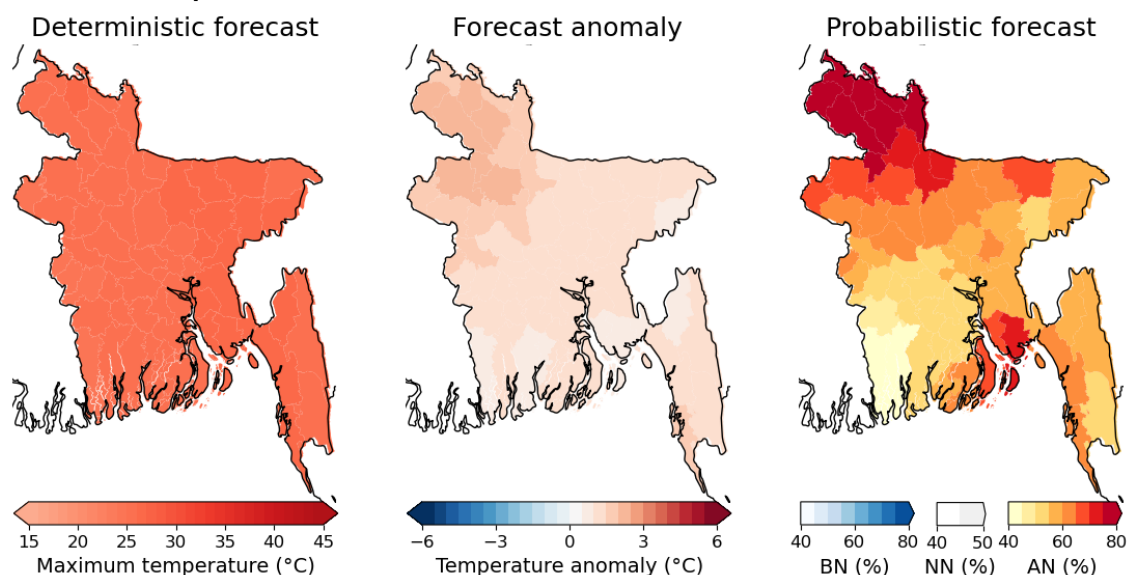
- Add here the text for guidance.

## 2. Weather Forecast for week 2 (Period: 08.12.2023 to 14.12.2023)

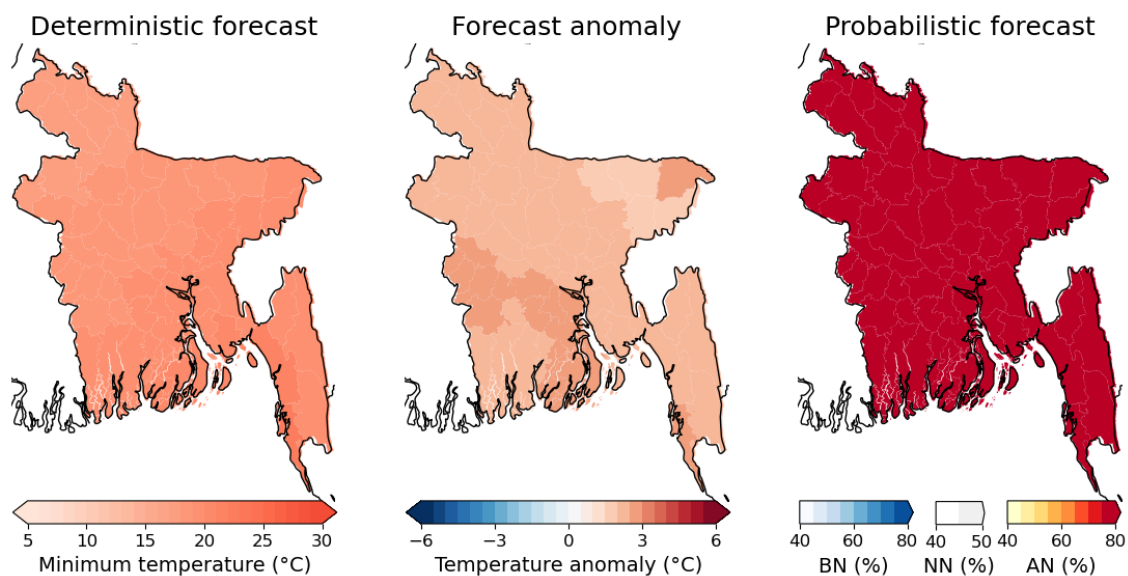
### 2.1 Significant Information

- Add here the text for significant information.

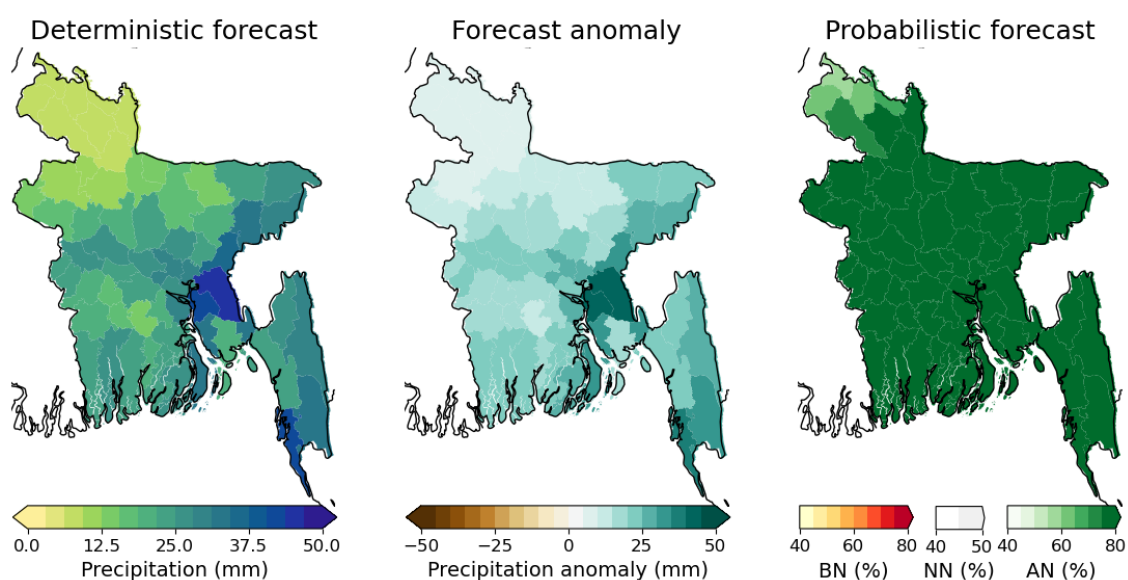
### 2.2 Maximum Temperature



### 2.3 Minimum Temperature



## 2.4 Rainfall



## 2.5 Forecast information at District level

Division	District	Maximum Temperature (°C)			Minimum Temperature (°C)			Rainfall (mm)		
		Deter-ministic	Anomaly	Probabilistic (BN/NN/AN)	Deter-ministic	Anomaly	Probabilistic (BN/NN/AN)	Deter-ministic	Anomaly	Probabilistic (BN/NN/AN)
Dhaka	Dhaka	26	1	26/16/57	19	2	0/5/94	30	25	1/7/92
	Faridpur	25	1	27/19/54	19	3	0/6/93	23	20	1/6/93
	Gazipur	26	1	23/20/57	19	2	0/6/94	27	22	2/7/91
	Gopalganj	25	1	31/18/51	19	3	0/5/95	15	14	1/7/92
	Kishoreganj	26	1	21/21/58	19	2	2/5/94	19	16	3/5/92
	Madaripur	26	1	30/18/52	19	3	0/5/95	19	18	2/4/94
	Manikganj	26	1	24/23/53	19	2	0/6/93	27	23	0/8/92
	Munshiganj	26	1	28/19/53	19	2	0/8/92	25	22	1/8/90
	Narayanganj	26	1	28/17/55	19	2	0/6/94	29	25	0/8/92
	Narsingdi	26	1	23/17/60	19	2	0/4/95	23	20	1/5/93
	Rajbari	25	1	23/22/54	19	2	0/7/93	24	20	0/7/93
Shariatpur	26	1	23/22/55	19	3	0/5/95	29	28	1/5/94	
Rajshahi	Bogra	26	2	11/19/70	18	2	0/10/89	12	10	0/13/87
	Joypurhat	26	2	9/15/76	18	2	2/7/91	10	8	4/16/80
	Naogaon	25	2	9/22/70	18	2	2/10/89	12	9	2/15/83
	Natore	25	2	18/18/64	18	2	0/7/93	21	17	0/10/90
	Nawabganj	25	2	10/25/66	18	2	2/10/89	15	12	2/15/84

Rangpur	Pabna	25	1	22/15/63	18	2	0/6/94	25	21	0/9/91
	Rajshahi	25	2	14/21/64	18	2	0/10/90	18	15	0/15/85
	Sirajganj	25	2	18/18/64	18	2	0/7/93	20	16	0/11/89
	Dinajpur	26	2	7/10/83	18	2	2/5/93	8	7	8/21/72
	Gaibandha	26	2	9/17/75	18	2	2/13/85	8	6	8/13/78
	Kurigram	26	2	7/10/83	18	2	2/5/94	7	7	10/13/77
	Lalmonirhat	26	2	6/9/85	18	2	2/4/95	8	7	15/19/65
	Nilphamari	26	2	7/8/85	18	2	2/3/95	8	7	15/22/63
	Panchagarh	25	2	6/9/85	18	2	2/4/94	6	5	28/14/58
Rangpur	26	2	7/11/82	18	2	2/7/91	9	8	7/16/77	
Thakurgaon	25	2	5/8/88	17	2	0/8/92	6	6	17/20/63	
Mymen-singh	Jamalpur	26	2	12/16/73	18	2	2/9/89	13	10	3/12/85
	Mymen-singh	26	1	15/25/60	19	2	2/9/89	17	14	3/11/86
	Netrakona	26	1	13/25/62	19	2	2/7/92	15	12	3/11/86
	Sherpur	26	1	11/18/71	18	2	2/11/88	14	11	4/13/83
Chitta-gong	Bandarban	25	1	26/23/51	20	2	2/2/97	34	31	3/5/92
	Brahamanbaria	26	1	23/20/57	19	2	0/9/91	34	33	1/8/90
	Chandpur	26	1	23/21/56	20	2	0/6/94	43	42	1/7/92
	Chittagong	26	1	15/23/62	21	2	0/2/98	24	23	2/3/95
	Comilla	26	1	20/22/58	19	2	0/4/96	46	45	1/5/94
	Cox's Bazar	26	2	12/23/65	22	3	2/2/97	43	38	5/3/92
	Feni	27	1	18/26/57	20	2	0/2/98	33	32	2/4/95
	Khagrachhari	27	1	16/25/59	20	2	0/2/98	27	25	1/3/95
	Lakshmipur	26	1	23/10/67	19	2	0/2/98	32	31	1/6/93
	Noakhali	26	1	18/12/70	20	2	0/2/98	20	19	1/5/94
Rangamati	26	1	28/14/58	19	2	2/2/97	29	27	3/4/94	
Khulna	Bagerhat	25	1	27/21/51	20	2	0/5/95	24	22	1/11/89
	Chuadanga	25	1	22/22/56	19	3	0/7/93	24	20	0/12/88
	Jessore	25	1	26/24/49	19	3	0/8/92	20	18	0/11/89
	Jhenaidah	25	1	23/24/53	19	3	0/8/92	20	17	0/9/91
	Khulna	25	1	31/26/44	19	2	0/11/89	25	23	1/15/84
	Kushtia	25	2	21/19/59	18	3	0/7/93	26	21	0/8/92
	Magura	25	1	25/22/53	19	3	0/9/91	18	16	0/8/92
	Meherpur	25	2	22/15/63	18	3	0/7/93	23	19	0/12/88
	Narail	25	1	30/18/52	19	2	0/5/95	18	16	0/8/92
Satkhira	25	1	36/22/41	19	2	0/18/82	24	22	1/19/81	
Barisal	Barguna	26	1	22/21/57	20	3	0/4/96	25	24	1/9/90
	Barisal	26	1	24/23/53	19	3	0/4/96	24	22	2/9/89
	Bhola	26	1	19/11/70	21	3	0/2/98	32	30	1/4/95
	Jhalokati	26	1	24/22/53	19	3	0/4/96	22	20	1/8/90
	Patuakhali	26	1	21/16/63	21	3	0/2/98	27	26	1/4/95
Pirojpur	26	1	24/22/53	19	2	0/4/96	21	20	1/8/91	
Sylhet	Habiganj	27	1	21/24/55	19	2	2/8/90	34	30	3/10/87
	Maulvibazar	27	1	23/20/57	19	2	2/10/89	30	26	4/15/81
	Sunamganj	26	1	13/19/68	18	2	2/8/90	24	21	3/12/85
	Sylhet	26	1	15/27/58	19	3	2/13/85	27	23	3/19/78

## 2.6 Guidance

- Add here the text for guidance.

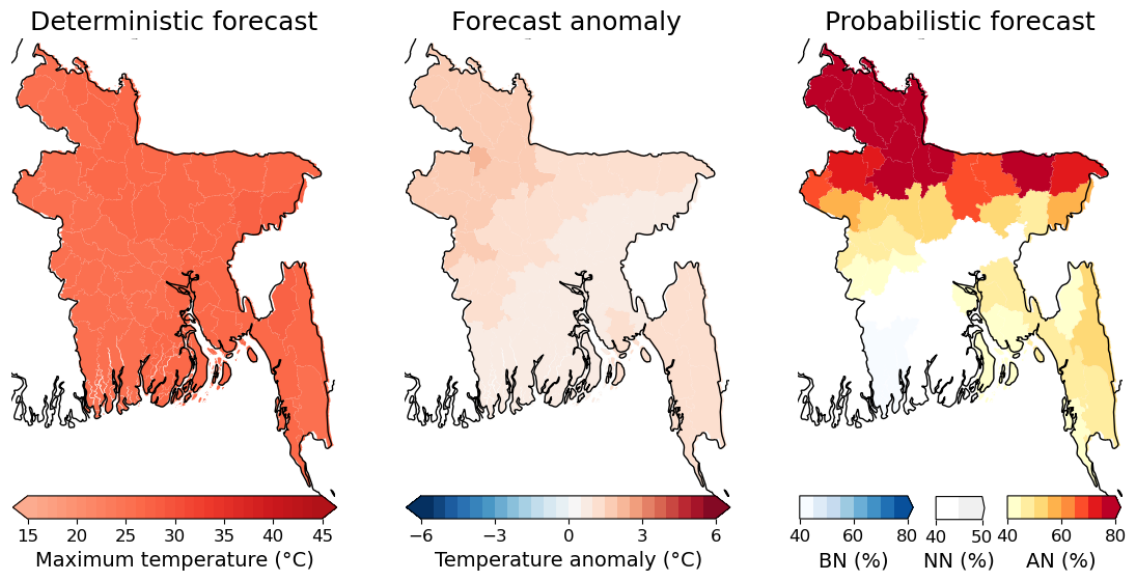
## 3. Weather Outlook for week 3+4 (Period: 15.12.2023 to 28.12.2023)

### 3.2 Significant Information

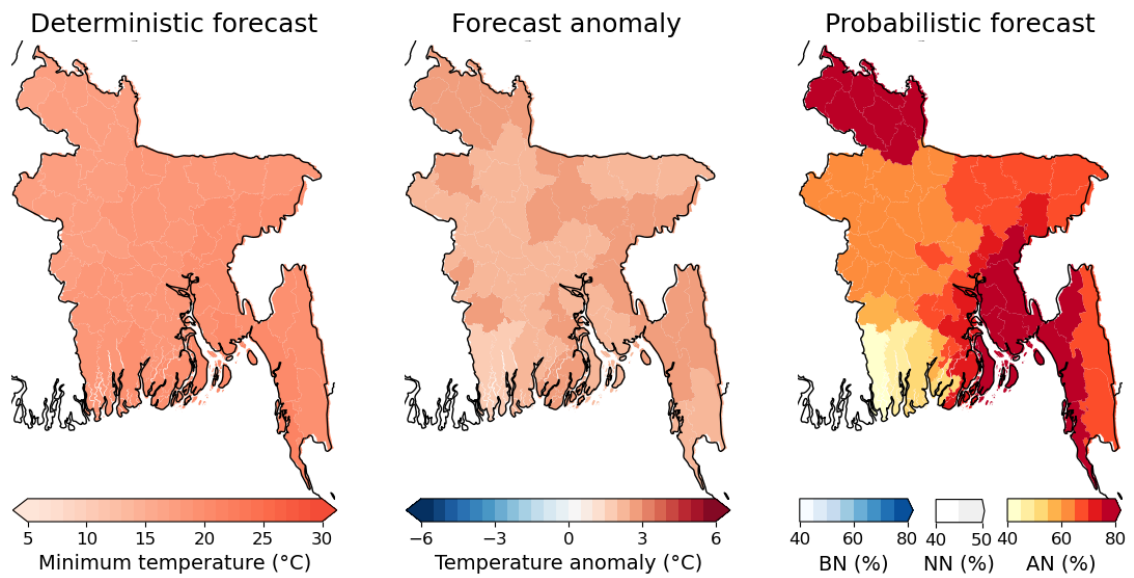
- Add here the text for significant information.

### 3.2 Maximum Temperature

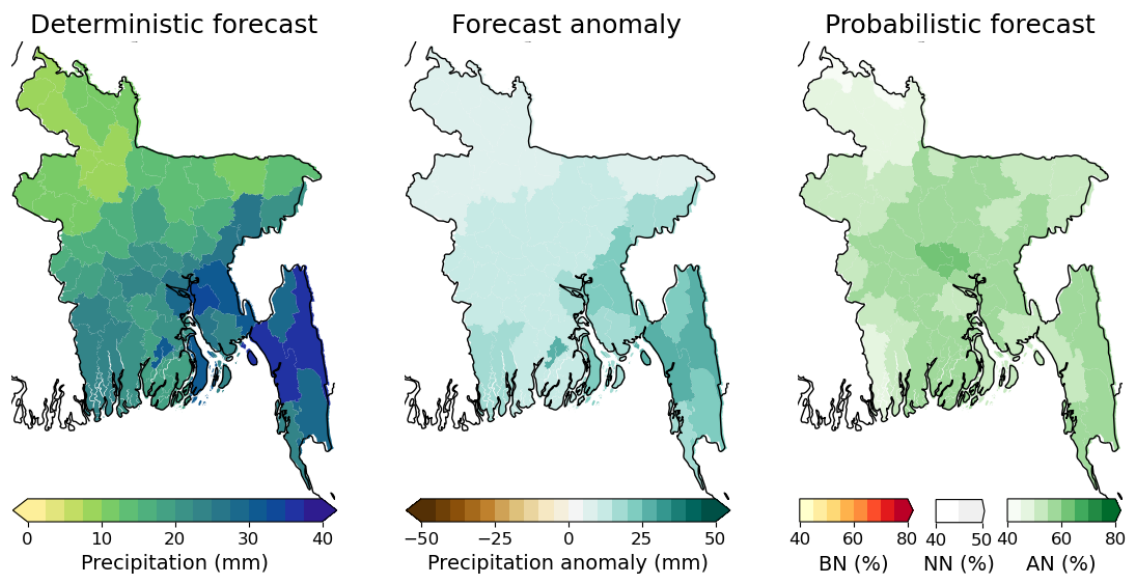




### 3.3 Minimum Temperature



### 3.4 Rainfall



### 3.5 Forecast information at District level

Jointly prepared by BMD, DAE, Weather Impact-Netherlands, Wageningen Environmental Research and Digital Innovation for Impact (Dii-Dhaka) under BWCSR (Component-C), supported by World Bank

Division	District	Maximum Temperature (°C)			Minimum Temperature (°C)			Rainfall (mm)		
		Deterministic	Anomaly	Probabilistic (BN/NN/AN)	Deterministic	Anomaly	Probabilistic (BN/NN/AN)	Deterministic	Anomaly	Probabilistic (BN/NN/AN)
Dhaka	Dhaka	26	1	28/35/37	19	2	6/31/63	22	12	20/20/60
	Faridpur	26	1	30/35/36	18	2	6/31/63	23	13	20/20/59
	Gazipur	26	1	26/34/40	19	2	5/31/64	17	10	20/23/57
	Gopalganj	26	1	33/31/35	19	2	6/29/65	19	12	19/26/55
	Kishoreganj	27	1	13/36/50	19	3	5/25/70	16	12	22/24/55
	Madaripur	26	1	34/28/39	19	3	6/25/68	22	14	20/25/55
	Manikganj	26	1	27/34/39	18	2	6/28/66	22	13	21/17/61
	Munshiganj	26	1	32/31/37	19	2	5/26/69	27	17	3/39/57
	Narayanganj	26	1	31/32/38	19	2	5/22/73	24	14	5/39/56
	Narsingdi	26	1	27/35/38	19	2	5/23/72	19	12	18/26/57
	Rajbari	26	1	25/31/44	18	2	9/29/62	20	12	5/35/60
Shariatpur	26	1	35/21/44	19	2	6/23/72	28	20	7/39/55	
Rajshahi	Bogra	26	2	12/13/76	18	2	13/27/61	10	8	20/27/53
	Joypurhat	26	2	9/16/75	17	2	7/29/65	9	7	35/17/48
	Naogaon	26	2	13/14/73	17	3	11/26/63	10	9	31/18/51
	Natore	26	2	16/31/52	18	2	18/20/62	12	10	6/41/53
	Nawabganj	25	2	15/15/70	17	2	12/28/60	11	9	6/41/53
	Pabna	26	1	21/34/46	18	2	14/24/62	15	11	4/38/58
	Rajshahi	26	2	14/29/57	17	2	12/28/60	10	10	6/44/50
	Sirajganj	26	1	14/34/52	18	2	11/25/64	15	11	5/37/58
Rangpur	Dinajpur	26	2	8/11/81	17	3	5/10/86	9	7	37/14/49
	Gaibandha	26	2	8/11/81	18	2	4/19/76	9	8	38/15/47
	Kurigram	26	2	7/8/85	18	3	5/8/87	11	9	39/14/47
	Lalmonirhat	26	2	8/10/82	18	3	6/8/86	11	9	38/17/45
	Nilphamari	26	2	9/10/81	18	3	5/11/84	11	9	36/18/46
	Panchagarh	26	2	5/11/84	17	3	5/13/82	9	8	40/16/44
	Rangpur	26	2	9/10/81	18	3	4/13/83	10	8	37/15/47
	Thakurgaon	26	2	6/12/82	17	3	4/13/83	9	8	36/18/46
Mymensingh	Jamalpur	27	2	11/10/79	18	2	7/31/63	13	10	23/21/55
	Mymensingh	27	1	10/23/67	19	3	4/31/65	14	11	21/21/58
	Netrakona	27	1	10/21/69	19	2	4/29/67	13	11	20/24/56
	Sherpur	27	1	10/13/77	18	3	6/30/63	13	10	30/18/51
Chittagong	Bandarban	25	1	33/21/46	19	2	9/21/69	30	22	13/27/60
	Brahamanbaria	26	1	27/37/36	19	3	5/19/75	27	20	20/23/57
	Chandpur	26	1	32/23/45	19	2	6/15/79	33	24	4/39/56
	Chittagong	27	1	25/29/46	21	3	4/15/81	35	27	16/33/52
	Comilla	26	1	30/24/47	19	3	5/15/80	31	20	18/27/55
	Cox's Bazar	26	1	33/23/44	22	2	3/14/83	24	16	19/25/56
	Feni	27	1	31/23/46	20	3	6/10/85	31	23	24/26/50
	Khagrachhari	27	1	27/29/44	20	3	4/11/84	29	23	14/30/56
	Lakshmipur	27	1	31/25/44	19	2	4/17/79	26	17	30/15/55
	Noakhali	27	1	28/27/44	20	2	3/15/82	23	17	25/24/51
Rangamati	26	1	21/29/51	19	3	9/25/66	35	28	6/34/59	
Khulna	Bagerhat	26	1	38/29/33	19	2	27/22/51	20	14	31/12/57
	Chuadanga	26	1	23/35/42	18	3	15/22/63	18	12	5/40/54
	Jessore	26	1	34/29/36	18	3	17/25/58	24	14	19/28/52
	Jhenaidah	26	1	26/33/42	18	2	17/21/62	19	13	4/37/60
	Khulna	26	1	42/26/32	18	2	28/27/46	23	16	30/17/53
	Kushtia	26	2	20/34/46	18	2	16/20/65	16	12	16/25/59
	Magura	26	1	28/33/39	18	2	11/27/62	21	13	0/40/60
	Meherpur	26	2	19/35/46	18	2	13/24/63	15	11	2/47/51
	Narail	26	1	33/29/37	18	2	14/24/62	22	14	20/24/56
	Satkhira	25	1	43/31/26	18	2	36/23/41	23	15	32/20/47
Barisal	Barguna	26	1	38/25/37	19	3	23/23/54	20	14	30/14/56
	Barisal	26	1	35/29/36	19	3	6/21/73	20	14	30/13/56
	Bhola	26	1	31/29/40	20	2	4/15/81	32	25	31/16/54
	Jhalokati	26	1	35/26/39	19	2	10/24/66	32	27	30/12/58
	Patuakhali	26	1	34/29/37	20	3	7/18/75	20	14	30/14/56
	Pirojpur	26	1	35/27/38	19	2	21/24/55	19	13	30/11/59
Sylhet	Habiganj	27	1	18/36/45	20	3	6/23/72	26	20	25/19/56
	Maulvibazar	27	1	15/28/57	20	3	5/25/70	22	16	24/26/50

	Sunamganj	26	1	11/13/76	19	2	5/27/68	12	10	24/25/52
	Sylhet	27	1	12/17/71	19	2	6/27/66	13	10	27/23/50

### 3.6 Guidance

- Add here the text for guidance.

### Forecast legend

Rainfall category	Amounts of rainfall
<ul style="list-style-type: none"> <li>• Light rain</li> <li>• Moderate rain</li> <li>• Moderately Heavy</li> <li>• Heavy rain</li> <li>• Very heavy rain</li> </ul>	2-20 mm/day 22-22 mm/day 23-43 mm/day Heavy rain: 44-88 mm/day Very heavy rain: $\geq 89$ mm/day
Probabilistic values <ul style="list-style-type: none"> <li>• AN (%)</li> <li>• NN (%)</li> <li>• BN (%)</li> </ul>	This value represents the chance that the forecast will with respect to the climatology, divided into three categories: Above normal (likelihood in percent) Near normal (likelihood in percent) Below normal (likelihood in percent)
<ul style="list-style-type: none"> <li>• Anomaly</li> </ul>	The difference between the deterministic value and the climatology (Climatology = Deterministic - Anomaly)